

USS Stoddard DD-566
1963-1964 Cruise



Sasebo, Hong Kong, the waters of the great Pacific; names recalling memories of the people and places, sea and steel which formulate the life of a destroyerman on duty.

The STODDARD was built by Todd Shipyards, Inc., in Tacoma Washington and launched on November 19, 1943. She was commissioned and became a fighting unit in April or 1944. The theater of action in which she played her part of World War II is the same in which she steams today: the Kurile Islands, Okinawa, the islands of the final strike at the Japanese Homeland. In wartime action she earned decorations for the American Campaign, the Asiatic-Pacific Campaign, World War II Victory, Navy Occupation Service, China Service and National Defense Service. She was decommissioned at the end of the war only to be recommissioned in March of 1951 at the outbreak of hostilities in Korea, this time to serve in the Atlantic and Mediterranean Seas. In December of 1954 STODDARD returned to her home in the Pacific to play her role in a peacetime Navy.

And this is the role she plays today. The combination of her steel and steam and the men of action who man her creates a living body with a personality and history of its own. In recent years, from her home port in San Diego, California, STODDARD journeyed to the ports of Seattle and San Francisco, to the South Pacific Islands, to Australia and New Zealand, to Panama during the 1962 Cuban crises and the numerous ports surrounding the China and Inland Seas. She aided in the evacuation of the Tachen Islands in 1955 and rescued Greek seamen from their sinking freighter off Luzon in February of 1962.

Operating as a unit of Destroyer Division 211 until August of 1960 and since as part of Destroyer Division 212 STODDARD has been awarded the Battle Efficiency "E" in 1955, 1956, and 1961, and the Anti-Submarine "A" on five occasions including the past three years. Through years of war and peace STODDARD's record has been a story of excellence.

May this book, dedicated to the men
make her steel decks ring with life,
convey to its reader that STODDARD
quality-excellence.

COMMANDING



Commander Charles L. Wall, Commanding Officer of the STODDARD from June of 1962 through February of 1964, graduated from Berea College in Kentucky in 1942. As a student he enlisted in the Navy's "V-7" program, commencing active duty at the U.S. Navy Midshipman's School in October of 1942. He was commissioned Ensign, USNR, in February of 1943.

In August of the same year, following further training in Diesel Engineering at Cornell University and in Anti-Submarine Warfare at Miami, Florida, He was assigned as Engineering Officer of USS PC 481. Operating from Casablanca, Morocco, PC 481 escorted convoys off North Africa and in the Mediterranean area with commander Wall aboard. He assisted in the decommissioning and

delivery of that ship to the French Navy in June of 1944.

Commander Wall was then assigned to the USS PC 1588 serving in the Pacific area, where he participated in the invasion of Iwo Jima. He served as Engineering Officer, Executive Officer, and Commanding Officer of that vessel.

Following World War II he accepted a regular Navy commission and served as Director of Naval Officer Procurement, Seattle, Washington from January 1947 until August of that year. Commander Wall then studied at the Naval General Line School in Newport, R.I. prior to becoming Executive Officer of the USS DIACHENKO (APD 123) in June of 1948.

During the Korean Conflict, Commander Wall served as Commanding Officer of the USS LST 1123 and as Operations Officer of the USS HENDERSON (DD 785), both operating in Korean waters. Following the Conflict, he served as Officer in Charge, U.S. Navy Recruiting Station and Office of Naval Officer Procurement in Cincinnati, Ohio. During this period, from January 1953 to July 1955, he obtained a Master's degree in Business Administration at Xavier University.

In August 1955, he became Executive Officer of the USS COMPTON (DD 705) and relieved as Commanding Officer of the USS BURDO (APD 133) in March of 1957.

Following duty with the Norfolk Group, Atlantic Reserve Fleet, until August 1961, he was assigned as Deputy Assistant Chief of Staff, J-1 Division, United Nations Command, U.S. Forces, Korea until relieving as Commanding Officer of the STODDARD.

Commander Wall is married to the former Jean E. Hansen of Forest Grove, Oregon. They have three sons and two daughters.



OFFICERS

Commander Theodore L. Morgan, Commanding Officer of the STODDARD from February 18, 1964 through the present, was born in Rome, Georgia on May 28, 1918 and enlisted in the Navy on December 1, 1936 at Macon, Georgia. He served his first tour of duty on board the USS NEW MEXICO (BB 40). From the NEW MEXICO he went to the USS WHIPPLE (DD 217), then in the Asiatic Fleet, serving in the Engineering Department. In 1940, Commander Morgan returned to the U. S. and joined PTC Squadron 2. This squadron was involved in experimental testing of sonar for use in high speed ASW surface craft. In 1941 he joined Motor Torpedo Boat Squadron 13 commanded by Lt. Bulkely of THEY WERE EXPENDABLE fame. While in Manila aboard PT31 he was re-



commended for and received a commission as Warrent Machinist Mate. Although PT31 was lost in Japanese occupied territory shortly after the outbreak of World War II in the Pacific, Commander Morgan evaded capture and received orders to the USS TRABAJADOR which served as a tender for PT boats. The TRABAJADOR was subsequently sunk by Japanese shore batteries in 1942. He then joined the 3rd Battalion Fourth Marines on Corrigidor and was taken prisoner. For the remainder of World War II he was held a prisoner of war in Tokyo and Yokohama.

At the conclusion of the war, Commander Morgan was released by the Japanese at Sendai and reported to Bowling Machinery and Manufacturing Company in New Orleans as ship's superintendent. In 1947 and 1948 as a Lieutenant (junior grade) he attended the five term program at the University of Idaho and then went to Line School in Newport R.I., where he received his Lieutenant commission in 1950. He then served as three inch battery officer on the USS MIDWAY until 1953 when he reported to the USS MELLETTE (APA 156) as First Lieutenant. Commander Morgan was assigned to the Naval Ordnance Unit in Key West in 1954 and 1955 and upon promotion to Lieutenant Commander assumed the Executive Officer's billet there. In 1956 he was assigned to the KENNETH D. BAILEY (DDR 713) as Executive Officer.

Commander Morgan was Executive Officer and, subsequently, Commanding Officer of the Naval Magazine and Net Depot at Newport R.I. in 1958 and 1959. He then went to the USS HANCOCK (CVA 19) as Gunnery Officer. Commander Morgan came to the STODDARD from the Headquarters of the Support Activities, Saigon, Viet NAM, which he commissioned in July 1962.





EXECUTIVE OFFICER

Commander Charles A. Whitmore graduated from the United States Naval Academy and was commissioned Ensign, United States Navy, on June 6, 1948. His first duty station was aboard the USS HAMNER (DD 718), a unit of the last division of destroyers based at Tsing Tao, China. HAMNER was one of the first ships to leave San Diego for the Korean Conflict.

From the Hamner, Commander Whitmore went to a four-month electronic school and from there went to the USS McDERMUT (DD 677) and helped to recommission her for action in the Korean Conflict. McDERMUT operated with a Fast Carrier Task Force and participated in shore bombardment of the North Korean coastal defenses.

In 1952 he attended Communications Post-graduate School at Monterey, California. His next assignment was with the Atlantic Fleet as a member of COMDESRON 12 Staff on the USS COMPTON (DD 705) operating out of Newport, R. I.

From May 1955 through 1957 Commander Whitmore served a tour of shore duty at the Long Beach Naval Station. He then reported aboard the USS RUSSELL COUNTY (LST 1090) as Commanding Officer. He was promoted to Lieutenant Commander and was made Division Commander of 1ST DIVISION 52.

Prior to becoming Executive Officer of the STODDARD, Commander Whitmore was attached to the Bureau of Personnel's Officer Distribution Section and attended the Naval War College at Newport, R. I.

Commander Whitmore and his wife, Barbara, their two daughters and son, Charley, reside at 218 'D' Avenue, Coronado, California.



Meeting of the minds



OFFICER'S

ROSTER



Lt. D.J. Brocklehurst
Engineering Officer



Ltjg. J.R. Lee
Gunnery Officer
(Sept. through Dec. 1963)



Ltjg. S.R. O'Neil
Gunnery Officer
(Dec. 1963 . . .)



Ltjg. J.W. Weiske
Main Propulsion Assistant



Ens. J.W. Edwards
Fire Control Officer



Ens. J.S. Day
First Lieutenant



Ens. R.A. Anawalt
Damage Control Assistant



Ens. N.A. Iannone
Electrical Officer



Ens. A.J. Dietzler
Second Division Officer



Ltjg. T. J. Cleere
Supply Officer
(July 1962 through Dec. 1963)



Ens. J.H.K. Shannahan
Supply Officer (Jan. 1964...)



Lt. R.E. Fleming
Operations Officer



Ens. L.D. Edwards



Ltjg. W. H. Adam
Communications Officer

Ens. D.T. Auten
Personnel Officer



Ltjg. J.R. Olsen
ASW Officer



Ens. S.G. Babson
Electronics Materiel Officer



Ltjg. T.S. Althouse
C.I.C. Officer

CHIEF PETTY OFFICERS



Grady, B. E., ETCS



Roderick, E. T., GMGC



Freeman, W. H., RDC



L to R: Seeley, L.C., BTCS, Chief Roderick, Young, R.A., SMC (raw), Haxel, M.H., RMCS.



Reposing: Kreebone, F. D., SKCA



Moore, F. F., MMC



Burger, C. A., EMC



Bounds, M. V., MMC

FLOTILLA

OPERATIONS

Departing San Diego, extensive exercises, in conjunction with the units of Flotilla Nine, are performed to peak the ship and its crew for its various missions in the West Pacific.



'Hose on the way'



'Manning the rail' for Flotilla Nine



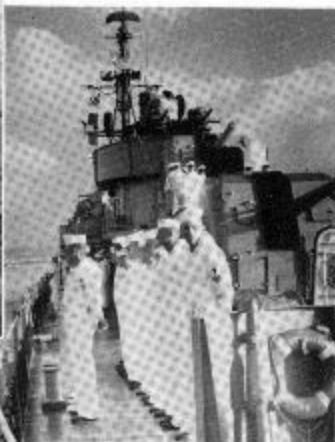
'Mail Call'



'Pit stop'



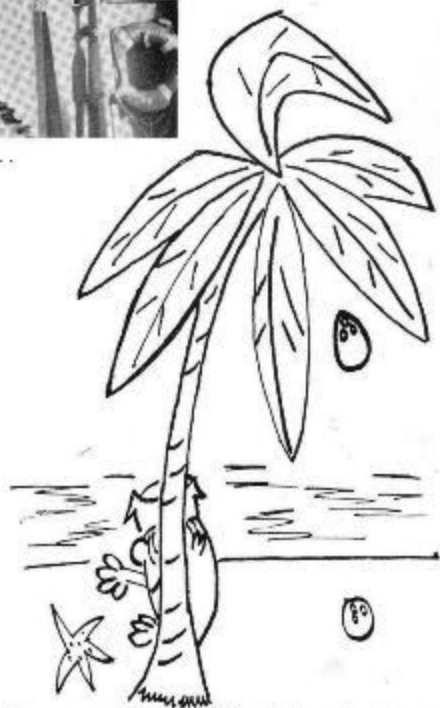
All hands to quarters



for entering ...



HAWAII



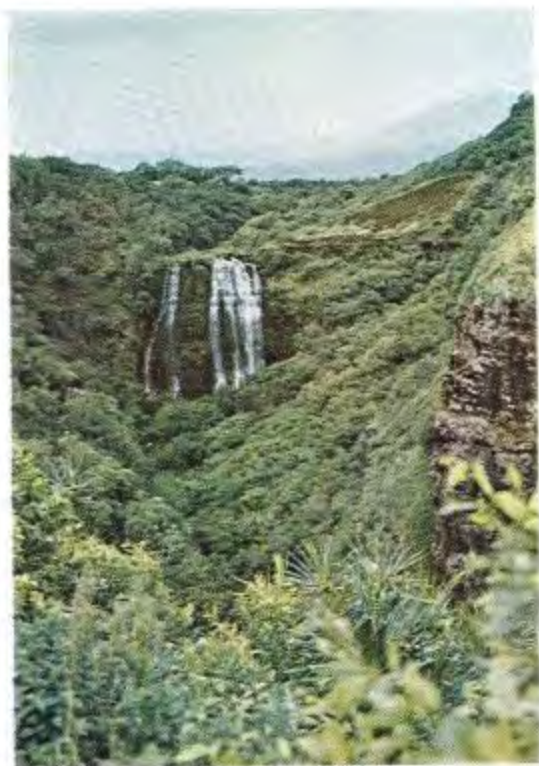
FILM NOT FAST ENOUGH TO GET THEM



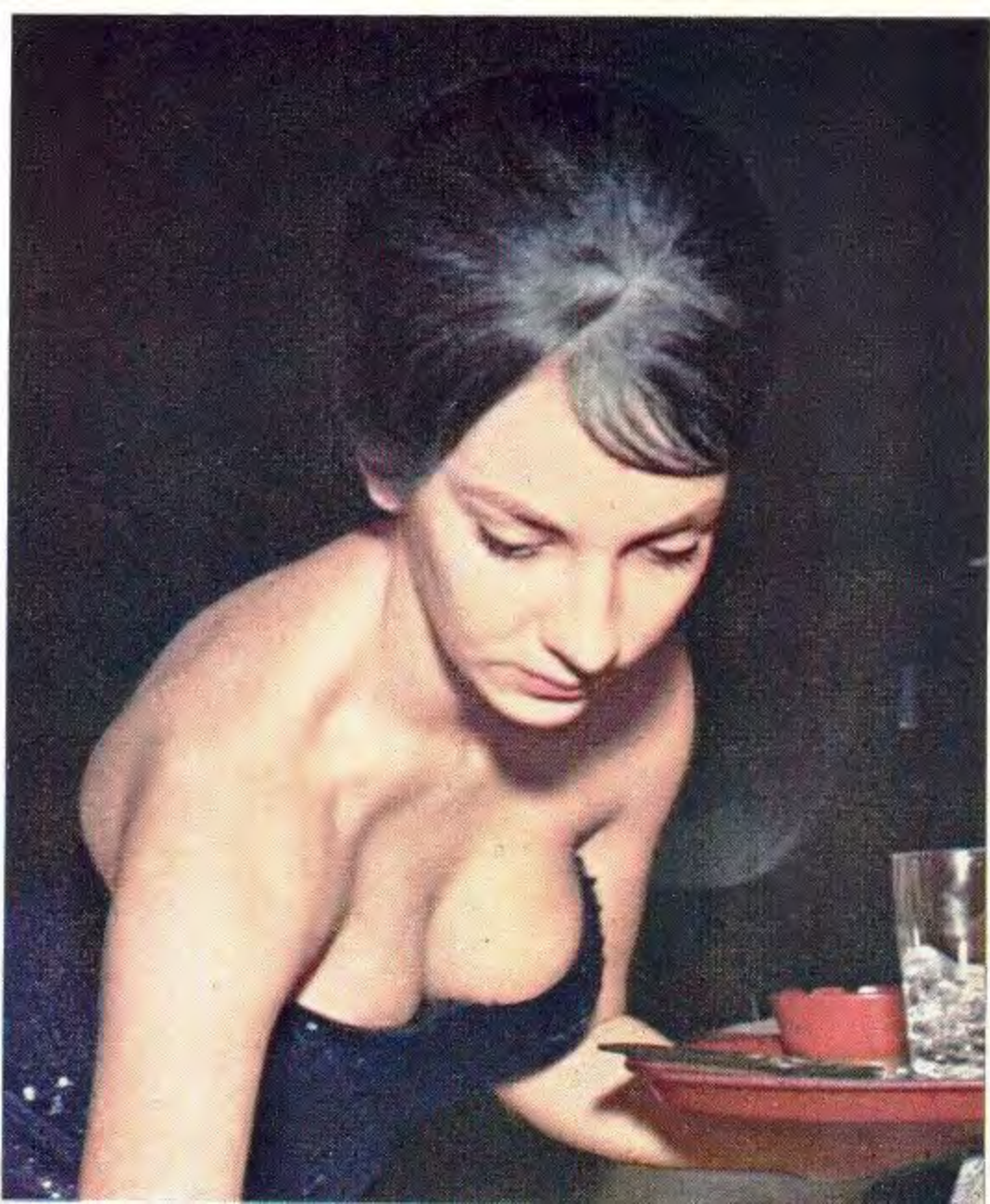
1
M
M
O
T
I
O
N
!



Hustling, bustling Hawaii,
More American than America,
A piece of the United States
Transplanted to the Pacific.

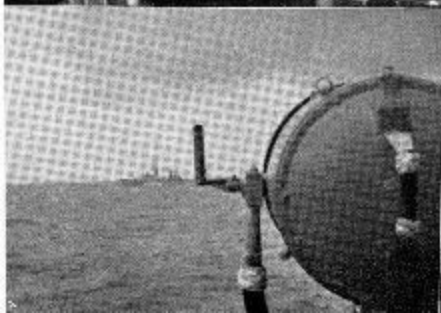


H
U
M
A
N





OPERATIONS





Wait til' I make Chief



'Morale man'
(MAIL PO)

Quiet, men at work. Operations personnel cause the eyes, ears, and voice of STODDARD to function.



O
C
D
I
V
I
S
I
O
N



Kneeling: R.O. Phillips, G.D. Bagatti, L.W. Coffman, F.C. Gilmer, J.A. Garside, T.R. Lu
Standing: J. R. Schmidt, L. R. Larson, M. C. Baeckel, T. A. Wettergreen, R.W. Risk, R.
Johnson, D.C. Hamilton, J.W. Helton, M.H. Haxel.



"Man your bag!"



09 DIVISION



First Row : W.C. Boles, C.H. Graves, G.E. Lausch, B.D. Streets, B.E. Grady, Ens. D.T. Auten. Second Row : LTJG T.S. Althouse, L.E. Allen, B.J. Goodnight, O.D. Anderson, D.O. Lechner, R.S. McLean, D.S. Weigel, G.W. Milatz, R.W. Wolf, J.L. Watts, W.H. Freeman.

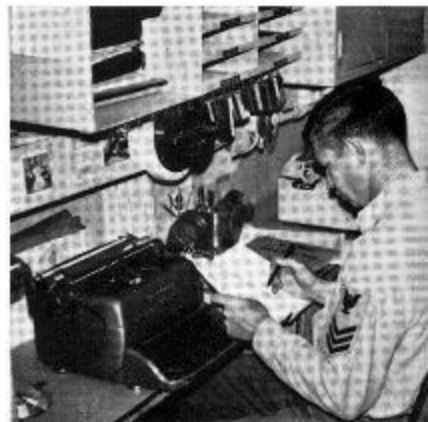
X DIVISION



B. N. Oder



G. D. Miller



P. L. Ryan



T. Merat



D. E. Auen

Located on the southwest portion of Luzon, the northernmost and largest of the Philippine Islands, Olongapo boasts a spacious harbor capable of accommodating the entire Seventh Fleet. Although STODDARD's stay was short, many old acquaintances were renewed and many well-remembered spots revisited.



O
L
O
N
G
A
P
O

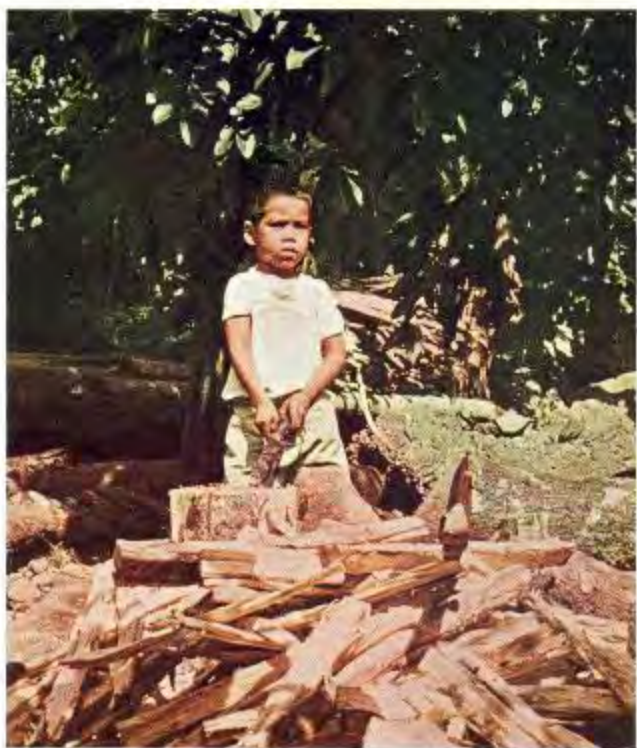


FACES



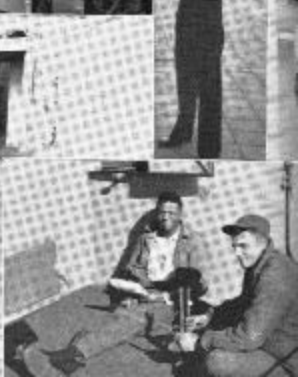
AND

PLACES





GUNNERY





Gunnery—"if it moves salute it;
if it don't move, paint it."

—H. Fasnaris.



Under new management;
open 0200—0400 daily



FIRST DIVISION



First Row Kneeling : B. Lincourt, R.W. Johnson, R.E. Mallory, Ens. J.S. Day, E.F. Dvorak.
Second Row Kneeling : R.A. Cheatham, J.U. Abaya, R. Ortiz, J.D. Ramirez, N.R. Owens.
Third Row : J.M. Lewis, J.D. Fontenot, J.E. Watson, C.L. Benedict, R.A. Harnison.
Fourth Row : N.W. Wilson, A.T. Pitre, J.S. Reading, N.M. Shobe, C.T. Humes, L.H. Brown,
C.E. Aurand. Fifth Row : P.D. Curtiss, A.J. Ausland.



No time for scratchin'



'Mouth'



Poetry in motion

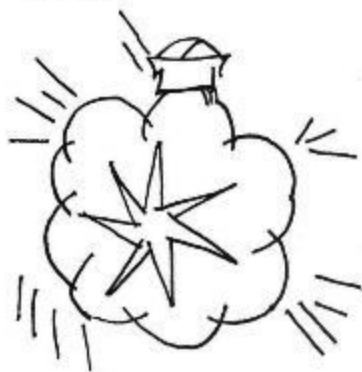
SECOND DIVISION

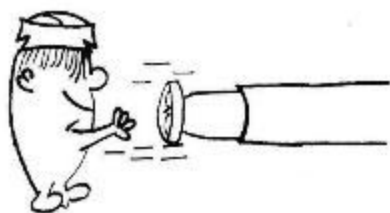


First Row: R.K. Housley, W.R. Lang, S.R. Smith, F.A. Johannes, R.L. Sellers, D. Ruiz.
Second Row: Ens. A.J. Deitzler, K.J. Fisher, R.J. Gress, H.A. Pettie, J.E. Jackson, T.W. Harrer, E. Hudson, H.E. Coker, C.W. Anderson, J.L. Martinez, I.L.D. Reeves, E.E. Mahaffey, C.B. Winchenbach, A.C. Brinkley, G.P. Lipsius, R.C. Deacon, Ens. J.W. Edwards.



'of course'



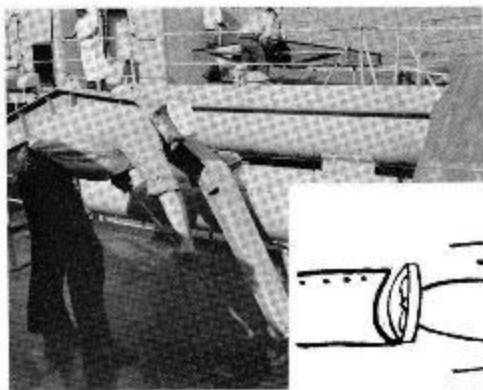


FOX

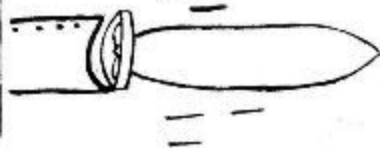
D
9
V
9
S
9
O
N



Kneeling: J.A. Dunn. Standing:
M.D. Morris, M.H. Cunningham,
D.J. Brown, R.P. Denbleyker,
A.J. Telemonde, LTJG J.R. Olsen.



Rare sight



SASEBO



A small agricultural community before World War II, Sasebo has grown to become one of Japan's major shipbuilding ports. From here one can visit the peace monuments of Nagasaki, China factories in Fukagawa, and the pearl farms of Arita.





Thanksgiving Day dinner
with our Japanese friends,



and fire drills,
a nightly ritual in Sasebo.



REMEMBER



Yes, STODDARD even has its own bonified tourists, fully equipped with cameras, light meters, and pocketfuls of yen.



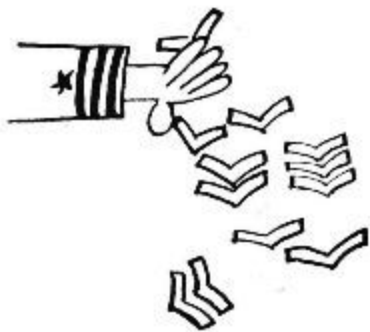


Long, clean lines of white hats standing by for the inspection by their Commanding Officer.

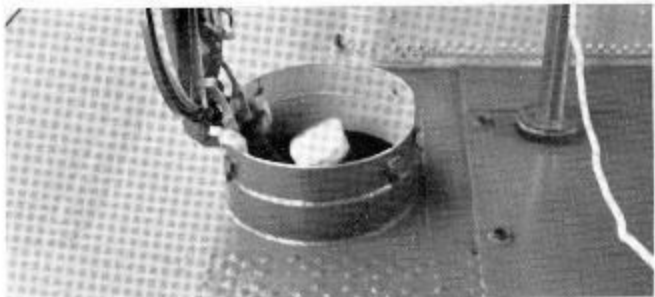
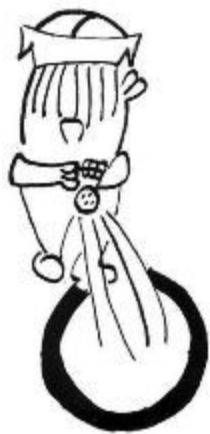




Making rate, putting on the crowns, moving up; are you next, who knows. There are many ways to express advancement. In the Navy we honor it with a mass formation.







'See you on April 17th'



Snipe type Bear



And rising from the subterranean regions . . .

These and the following pictures are rare shots of an animal seldom seen and unknown to all but others of its kind—the snipe.



B DIVISION



First Row: S.L. Garro, I.G. Seeley, D.D. Mell, J.E. Erway, A.R. Coffelt, J.D. Navarro, C.T. Hughs, M.D. Sanchez. Second Row: LT D.J. Brocklehurst, J.J. Hale, J.V. Starkey, T.W. Gaik, L.R. Wright, G.F. Cowee, R.D. Cyr, R.H. Green, G.T. Hall, R.D. Borley, B.W. Bacon, D.E. Horton, C.P. Bieri.



God bless our home





M D9V9S90N



Kneeling: D.L. Quaschnick, S.G. Croghan, R.A. Merrill. Standing: LT. D.J. Brocklehurst, F.F. Moore, R.D. Tovrea, E.L. Howell, D.I. Carnes, R. Bergeron, R.G. Skawski, R.C. Thompson, D.R. Gillpatrick, M.V. Bounds, Ens. N.A. Iannone.



Kneeling: D.D. Ford, T.S. Bilardi, T. Hurst, E. A. Garg. Standing: LT D.J. Brocklehurst, McElhannon, J.P. Melton, D.M. Blumenthal, C.E. Hamblen, R.L. Crote, R.G. Richards, J.A. Better, J.M. Davenport, R.C. Steger, C.A. Burger, G. Good, Ens. R.A. Anawalt, Ens. N.A. Iannone.



R
DIVISION



KAOHSIUNG TAIWAN

NEBX at the dip at the entrance to Kaohsiung harbor... enter STODDARD.



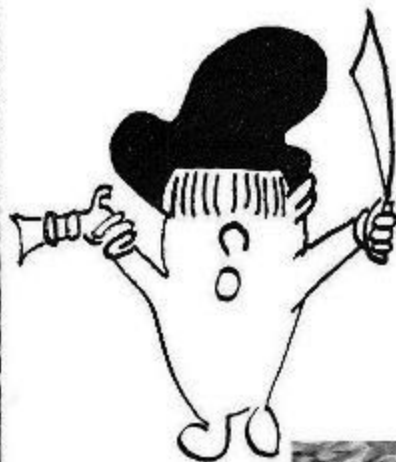
Kaohsiung is a Sprawling city with 600,000 people living under its roofs. Besides being the second largest port on the island of Taiwan, it is also the main resting place for the U. S. destroyers in between patrols of the Communist Chinese coast.



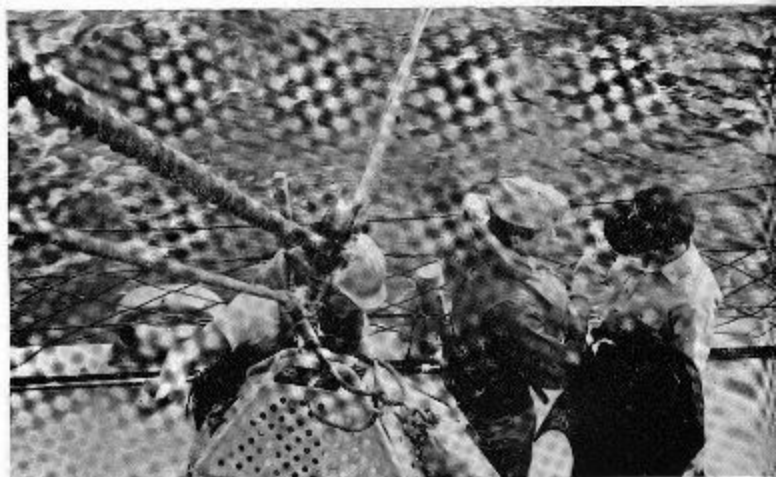
THE TAIWAN PATROL



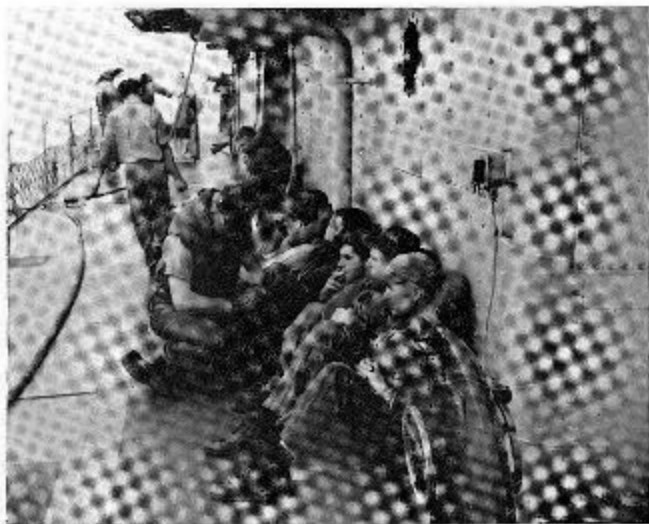
Dipping the Ensign



Patrolling the Straits of Taiwan is not the easiest duty of a destroyer in the West Pacific; the days at sea become long and tedious, weather is often foul. Our duty there, however, is a definite one. We know that our presence helps to stem the flow of communism to free world nations.



The Supply Officer—relieved to see his relief.



just waitin'



The after station



The people of Taiwan; old, young, industrious, overcrowded, but always good natured.





SUPPLY



None off the top, please.

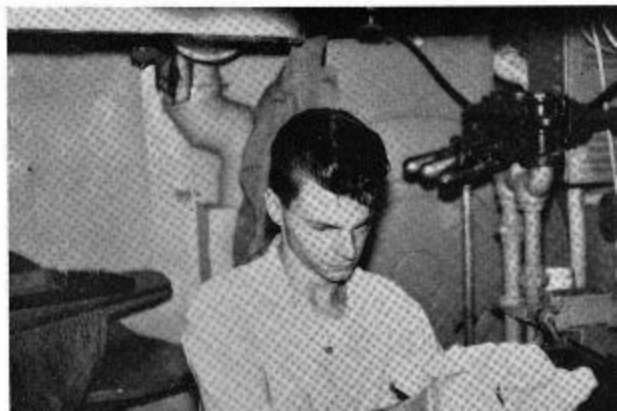
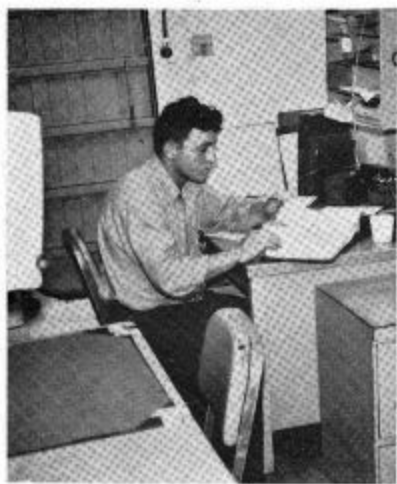


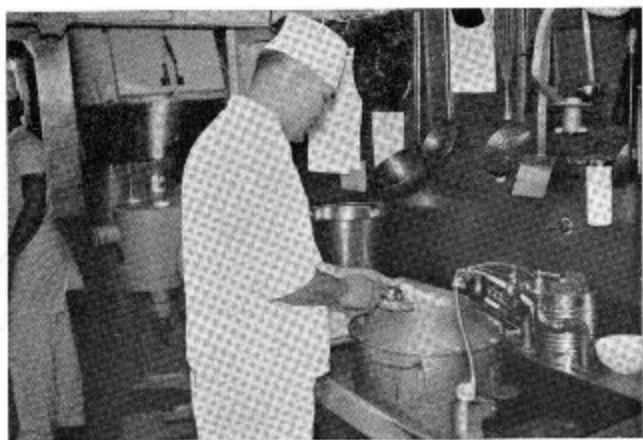
Meeting: W. Zadrozny, L.P. Bolivar, A.E. Enriquez, G.O. Stone, J. Lomibao.
Standing: F.D. Kneebone, G.A. Coppinger, R.A. Ciciarelli, A. J. Scherrer, M. J.
Whitehead, K.P. Clark, E.J. Garro, M.L. Cranke, E.L. Hatley, A.O. Plummer,
V. Jackson, W.D. Pruitt, F.M. Ramos, C.H. Joyce, Ens J.H.K. Shannahan.





"Now secure all mess
cooks and stewards mates."
Our supply department
has its own version of
service to the fleet.
To whom it may concern;
"Sorry about that,
shipmate."







Skyscrapers perched on
Rickshaws and Mercedes
Oriental and British Vict
Kimonos and tapered sla
Chinese, Japanese, Briti
Portuguese, Indian, Am
Sampans and Steamships
Kowloon Ferrys weaving
Ever vanishing web of w

HONG

KONG





DEPARTING SHIPMATES



It's a custom among officers to present departing mess members with a ship's plaque.



It's also customary to pipe retiring petty officers over the side. Men of strong character and abundant ability left STODDARD in Hong Kong.



Away the 'Boats'



Haiyako, a pair of good Joes

THE

ISLE

OF

HONSHU

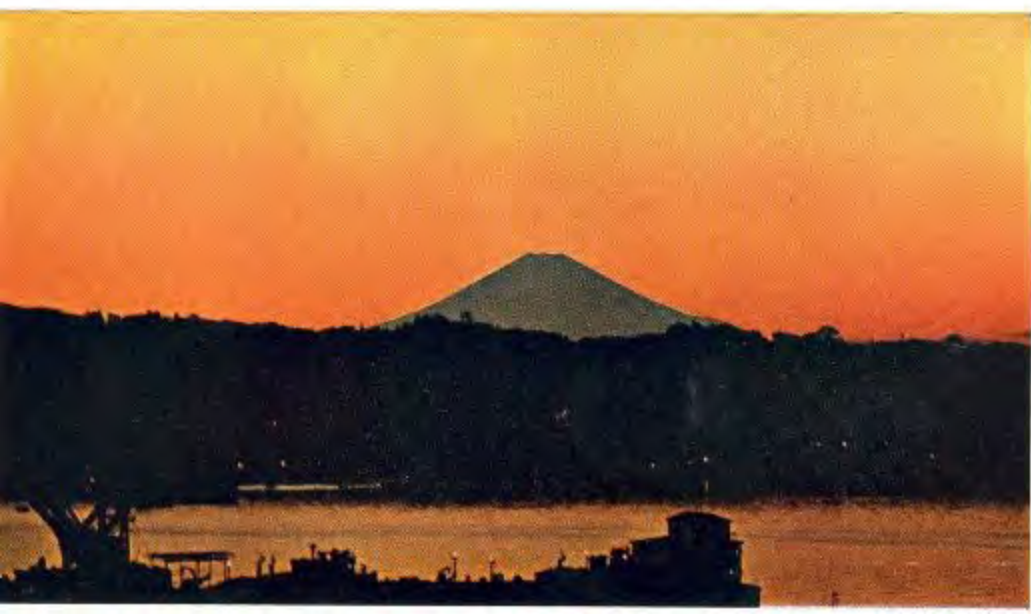
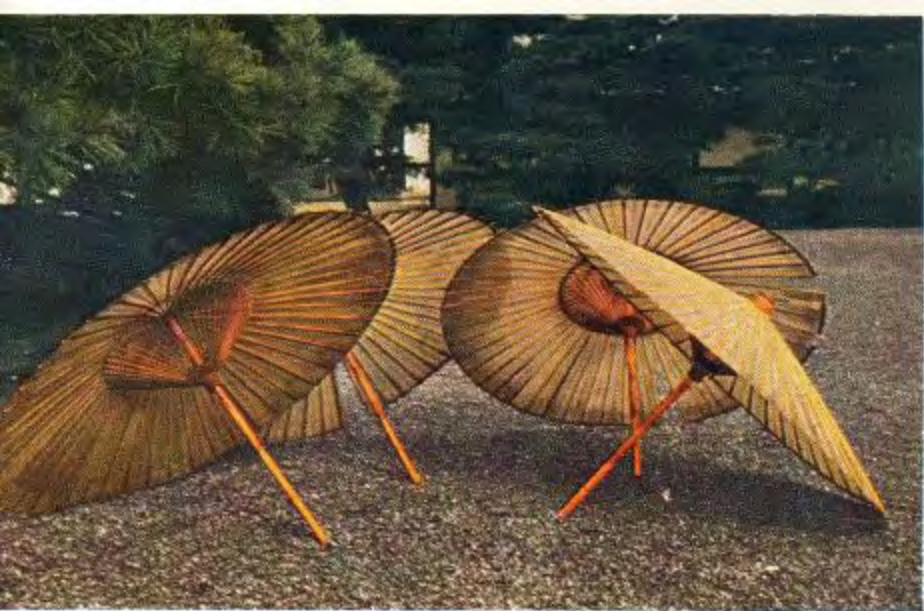


STODDARD moors at the United States Naval Base and ship repair facility in Yokosuka, Japan, the island of Honshu, the largest and most highly populated of the Japanese Islands.

From Yokosuka, lines of STODDARD tourists can be seen boarding buses and trains for such scenic cities Kanakura, shown in these pictures, Yokohama, Tokyo, Nikko, and the great mountain of Fujiyama.







SHIP'S



With best wishes



Smile for which camera, Commander

Although several divisional parties were held in other ports of call, STODDARD decided to have its annual WESTPAC free-for-all at the Club Alliance in Yokosuka. The 'tall man' was presented with bright warr for his wife to polish, consumptions were tested and Clark did some kind of a dance.



Consumption



A funny thing happened to me on the way to the ship this morning...

CHANGE OF COMMAND



An end—a beginning . . . I relieve you,



The trill of the bos'n's pipe, the last salute
—a big man.





Fare thee well funny-money,
chopsticks, smiling Buddhas,
doe-eyes.



SAYONARA



ADAM, Warren H. LTJG, USNR
 ALTHOUSE, Thomas S. LTJG, USN
 ANAWALT, Richard A., ENS, USNR
 AUTEN, Dick T., ENS, USNR
 BABSON, Sanford G., ENS, USNR
 BROCKLEHURST, Donald J., LT, USNR
 CLEERE, Timothy L., LTJG, USNR
 DAY, James S. Jr., ENS, USNR
 DEITZLER, Andrew J., ENS, USNR
 EDWARDS, Joseph W., ENS, USN
 EDWARDS, Larry D., ENS, USNR
 FLEMING, Robert E., LT, USNR
 IANNONE, Niles A., ENS, USN
 LEE, Joe R., LTJG, USN
 MORGAN, Theodore L., CDR, USN
 OLSEN, James R., LTJG, USN
 O'NEIL, Stephan R., LTJG, USN
 SHANNAHAN, John H.K., ENS, USNR
 ABAYA, Jose U., SA
 ALLEN, Lewis E., RD2
 ANDERSON, Charles W., FT3
 ANDERSON, Ollie D., RD2
 ANDRES, Florencio B., TN
 AUEN, David E., SN
 AURAND, Cecil P., SA
 AUSLAND, Aaron J., SN
 AVERETT, Robert D., SA
 BACON, Bernard W., FA
 BAECKEL, Michael C., QM3
 BAGATTI, Gerald D., SM3
 BAKER, John W., EMFN
 BALDRIDGE, Larry D., SN
 BALL, Thomas C., FN
 BARKER, Arliegh W., RM1
 BATES, Douglas G., FN
 BAUTISTA, Serafin R., TN
 BENEDICT, Carl L., TMSN
 BERGERON, Rodrigue (n) Jr., MMFN
 BETTENCOURT, John A., EM3
 BIERI, Gerald P., BT3
 BILARDI, Tony S., EM2
 BLACKMON, Jerry L., BT3
 BLUMENTHAL, Daniel M., SF1
 BOLES, Welby C., RD1
 BOLIVAR, Loreto R., TN
 BOONE, Robert J., MM1
 BORLEY, Rodney D., BT3
 BOUNDS, McPherson V., MMC
 BREEDING, Charles E., SM3
 BRINKLEY, Andrew C., FTG3
 BROWN, David J., TM3
 BROWN, Larry H., SN
 BROWN, Robert N., ETSN
 BURGER, Corbett A., EMC
 BUCKLEY, James W., FA
 CALDER, John F., RDSN
 CAGLE, Carl J., FA
 CAHILL, Charles F., II, MM3
 CARNES, Danny I., MMFN
 CHEATHAM, Richard A., SA
 CHEYNEY, Jerry E., SN

CICCIARELLI, Rudolph A., CS3
 CLARK, Kenneth P., ICFN
 COFFELT, Allan R., FA
 COFFMAN, Lyle W., RM3
 COKER, Hoyt E., GMG1
 COLE, Donald R., RDSN
 COOLEY, David M., IC1
 COPPINGER, Glenn A., SA
 COWEE, Gary E., BT3
 CRANKE, Mitchell L., SN
 CROGHAN, John G., MM3
 CRONE, Rodney L., DC22
 CUNNINGHAM, Morris H., SO1
 CURTISS, Patrick D., BMSN
 CYR, Richard D., BTFN
 DAVENPORT, Joseph M., SF1
 DAVIDSON, Henry C., BT2
 DEACON, Robert C., SN
 DEAN, Larry T., BT3
 DELAROSA, Turner (n.), GMG3
 DELPH, James J., MM2
 DELPII, Scott C., BM3
 DENBLEYKER, Ronald P., SOGSN
 DRAGER, Erwin M., SN
 DUNN, John A. Jr., TM3
 DVORAK, Edward F., BM1
 ENRIQUEZ, Alfredo E., DK2
 ERWAY, John E., FA
 FATI, Carl D., RMSN
 FERNANDEZ, Joseph S., CS1
 FISHER, Kenneth J., FTCS
 FONTENOT, James D., SN
 FORD, Donald D., EM1
 FOUST, Richard O., MMFN
 FREEMAN, William H., RDC
 FULLER, William W., FN
 GARFIELD, William R., RM3
 GARG, Edward A., EM3
 GAIK, Theodore W., FN
 GARRO, Eldon J., SN
 GARRO, Stephan L., BTFN
 GARSIDE, Joseph A., QMSN
 GERTH, Roger A., FA
 GILLPATRICK, David R., FN
 GILMER, Fred C., RM2
 GODFREY, Ernest E., RM3
 GOOD, Gary (n.), SFM3
 GOODNIGHT, Billy J., ETR3
 GOVERNOR, Earl II., CS1
 GRADY, Blaine E., ETCS
 GRAVES, Charles H., RD2
 GREEN, Richard II., BT3
 GRESS, Roger J., GMG3
 GUARINO, Arthur J., FN
 GUERRA, George R., SA
 HALE, James J., BT1
 HALL, George T., FN
 HAMBLIN, Curtiss E., FN
 HAMILTON, David C., SM3
 HANCOCK, Rex E., MM2
 HARMISON, Richard A., SA

ROSTER

HARRER, Thomas W., FTG3
HARRISON, John R., SN
HATLEY, Elza L., SK1
HAXEL, Milton H., RMCS
HELTON, James W., SM3
HENDRICKS, Kenneth L., BT1
HETZEL, Phillip A., SA
HOWELL, Eugene L., FN
HUDSON, Everett (n.), GMG1
HUGHES, Charles T., BT2
HUMES, Daniel G., SN
HUNTER, Robert E., EN3
HURST, Thaddeus (n.), MR3
HOUSELY, Richard K., SN
JACKSON, Harry V., SK2
JACKSON, James E., GMG2
JOHANNES, Francis A., SN
JOHNSON, Marc D., ETN3
JOHNSON, Robert L., SN
JOHNSON, Robert W. Jr., BM2
JOYCE, Charles H. Jr., CS2
KIDDER, Horrance W. Jr., SKSA
KNEEBONE, Franklin D., SKCA
KROEN, Harry R. Jr., YN3
KUIH, Richard A., SH1
KUMRE, Frank E., BT3
LAUSCH, Gary E., RD3
LANG, William R. Jr., FTG3
LARSON, Larry R., SN
LECHNER, David O., ETR3
LEE, Frank A., SN
LEWIS, John M., SN
LINCOURT, Barry (n), SN
LIPSIUS, Gerald P., SN
LOMIBAO, Jose (n.), SD1
LUKE, Terry R., SN
MAHAFFEY, Edward E., SN
MALLORY, Roy E., BM3
MARTIN, Patrick A., ICFA
MARTIN, William E., GMG2
MARTINEZ, Jose L., GMG2
McELHANNON, Dickson K., MM1
McLEAN, Robert S., SN
MELL, Dennis D., FN
MELTON, James D., ICFN
MERAT, Thomas (n), YN1
MERRILL, Ray A., MM3
MILATZ, George W., RD3
MILLER, Gerald D., YN3
MOORE, Fred F. Jr., MMC
MORRIS, Max D., SOG3
NAVARRO, Joseph, D., FA
NORTH, Fredrick J., BM1
OCTUCK, Henry (n), SA
ODER, Bruce N., HIM1
ORTIZ, Robert (n.), SN
OWENS, Neal R., SN
PARKER, David (n.), FN
PERRY, Wayne L., RM3
PETTIE, Harley A., SA
PETTIT, Alvin S., GMG3
PHILLIPS, Ray O., QM1
PITRE, Alvin T., SA
PLUMMER, Albert O., SN
PRUITT, Warren D., CSSN
QUASCHNICK, David L., MM2
QUINTINILLA, Vincente W., SH3
RAINES, Robert W., BT3
RAMIREZ, Jose D., SN
RAMOS, Froilan M., SD3
READING, Joseph S., SN
REEVES, Hubert D., SN
RICHARDS, Richard D., EM2
RISK, Ronald W., RM2
ROBBINS, Jay D., SOGSN
RODERICK, Emile T., GMGC
RUIZ, Dennis (n), SN
RYAN, Patrick L., PN1
SANCHEZ, Micheal D., SN
SCHERRER, Alfred J., SH2
SCHMIT, James R., RM3
SCHOOLER, Richard A., GMG3
SEELEY, Leonard G., BTCS
SELLERS, Robert L., GMG3
SHAPEL, Randall L., BTFA
SHARRETT, Gerald L., SN
SHEILDS, Shawn E., RDSN
SHIREY, Stanley A. Jr., ICFA
SHOBE, Nathaniel M., SN
SHORT, James C., RDSN
SIMON, Thomas E., FN
SKAWSKI, Robert G. MMFN
SLINKER, Gary D., MMFN
SMITH, David A., ETNSN
SMITH, Sidney R. Jr., SN
STARKEY, James V., BT1
STEGER, Robert C., EM3
STEPHAN, Richard C., FR
STEVENS, John S., MM1
STONE, Gary O., FN
STOVALL, James E., FTG3
STREETS, Burleigh D., ETN3
SWEET, George F. Jr., SOGSN
TELEMONDE, Andrew J., SOG3
THOMPSON, Richard C., MM3
TOVREA, Ronald D., MMFA
UGALDE, Juan (n.), SD2
VAIL, Morry L., RD3
WACHTER, Clarence R. Jr., MM2
WASKIEWICZ, Anthony M., RD2
WATSON, James E., SN
WATTS, Jack L., RD3
WEIGEL, David J., ETR3
WETTERGREEN, Tod A., SN
WHITEHEAD, Micheal J., FA
WILSON, Norman W., SN
WINCHENBACH, Carlton B., GMG2
WOLF, Robert W., RD1
WOODS, Roy L., BT1
WRIGHT, Lawrence R., BT2
YOUNG, Robert A., SMC
ZADROZNY, William (n.), FTGSN